



HOW-TO TILE


PREPARATION

In general, surfaces must be flat and firmly fixed. Clean off dust, oil, grease and all loose contaminated materials. Ensure that the surfaces are dry before tiling with no residue or permanent damp. Prime porous surfaces with ABA MULTIPURPOSE PRIMER AND ADDITIVE.

Prior to commencing any tiling project, read the packaging and datasheets carefully to ensure the surface has been prepared properly and the correct application procedure has been followed.

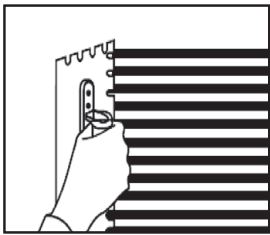
CHOOSE THE RIGHT ADHESIVE

Use this table to select an adhesive that is suitable for the substrate and situation of your project.

	Walls	Floors	Indoors	Outdoors	Wet Areas	Glazed tiled surface	Unglazed tiled surface	Quarry tiles	Ceramic Tiles	Metal surface	Vinyl tiles	Vinyl backed carpet tile
FLOOR AND WALL TILE ADHESIVE	✓	✓	✓	✓	✓		✓	✓	✓			
READY MIXED WALL TILE ADHESIVE	✓		✓		✓		✓		✓	✓		
VINYL AND CARPET TILE ADHESIVE		✓	✓								✓	✓



WALL TILING



STEP 1

Spread the mixed adhesive with notches running horizontally across the wall with a 6mm notched trowel. Hold the notched trowel at a shallow angle against the wall.



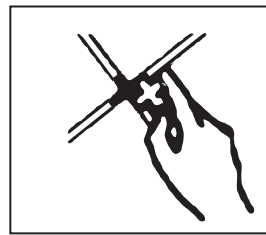
STEP 4

Remove any surplus adhesive from the tile before it sets.



STEP 2

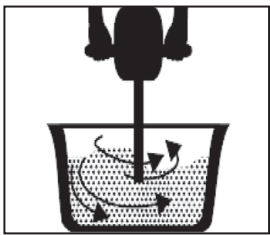
Press and slide the tile into the adhesive at right angle to the notch pattern and position the tile.



STEP 3

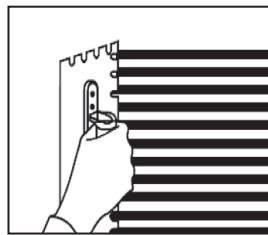
Use tile spacers if desired, to ensure even spacing.

FLOOR TILING



STEP 1

Mix adhesive according to instructions on packaging by adding powder to water



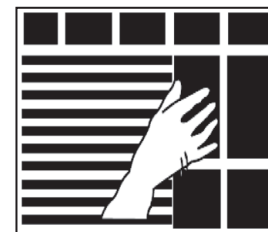
STEP 2

Apply adhesive to the floor substrate with a minimum 10mm notched trowel.



STEP 4

Remove any surplus adhesive from the tile before it sets.



STEP 3

Press and slide the tile into position ensuring the back of the tile is in good contact with the adhesive. Use tile spacers if required.

CUTTING

STEP 1

Measure the tiles to be cut.

STEP 2

Use a combination or platform tile cutter to cut the tiles.

STEP 3

To cut a half circle, use tile nippers to break off small pieces at a time.



NEED HELP WITH YOUR PROJECT?

See our How-to flyers, product tips & tricks and more on our website www.aba-sea.com